

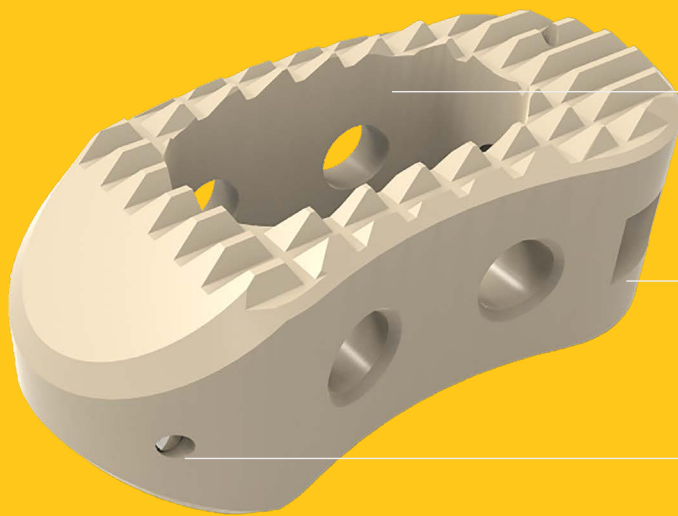


CTL AMERICA
rethink what's possible®

CEZANNE I & II™

TRANSFORAMINAL LUMBAR INTERBODY FUSION SYSTEM

Cezanne™ and Cezanne™ II TLIF PEEK Cages are transforaminal lumbar interbody fusion implants designed to accommodate a wide range of patient anatomies and surgical preferences.



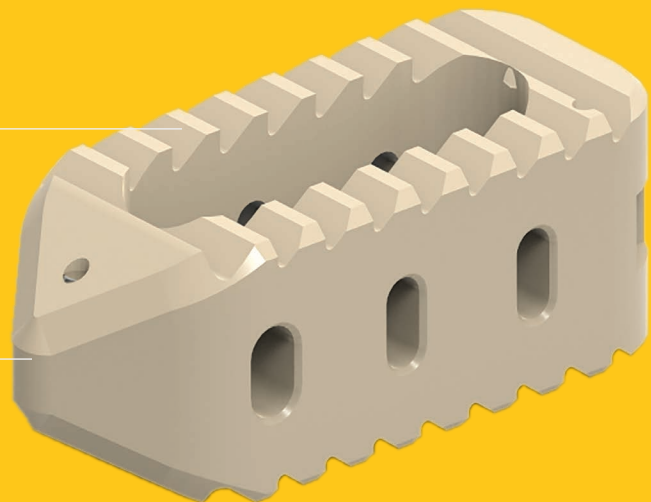
Large graft window allows for maximum graft volume and greater likelihood of fusion

Curved design accommodates a wide variety of patient anatomies

Distinct radiopaque markers ensure proper implant placement

Aggressive serrations ensure endplate fixation

Self distracting tip for ease of insertion





Cezanne™ TLIF PEEK Cage - Curved, 0 Degree

W11 x L26	W11 x L30	
Part Number	Part Number	Height (mm)
017.1107	017.1707	7
017.1108	017.1708	8
017.1109	017.1709	9
017.1110	017.1710	10
017.1111	017.1711	11
017.1112	017.1712	12
017.1113	017.1713	13
017.1114	017.1714	14
017.1115	017.1715	15
017.1116	017.1716	16

Cezanne™ II TLIF PEEK Cage - Straight, 0 Degree

W11 x L26	W11 x L30	
Part Number	Part Number	Height (mm)
018.1107	018.1707	7
018.1108	018.1708	8
018.1109	018.1709	9
018.1110	018.1710	10
018.1111	018.1711	11
018.1112	018.1712	12
018.1113	018.1713	13
018.1114	018.1714	14
018.1115	018.1715	15
018.1116	018.1716	16

Cezanne™ TLIF PEEK Cage - Curved, 8 Degree

W11 x L26	W11 x L30	
Part Number	Part Number	Height (mm)
017.1307	017.1907	7
017.1308	017.1908	8
017.1309	017.1909	9
017.1310	017.1910	10
017.1311	017.1911	11
017.1312	017.1912	12
017.1313	017.1913	13
017.1314	017.1914	14
017.1315	017.1915	15
017.1316	017.1916	16

Cezanne™ II TLIF PEEK Cage - Straight, 8 Degree

W11 x L26	W11 x L30	
Part Number	Part Number	Height (mm)
018.1307	018.1907	7
018.1308	018.1908	8
018.1309	018.1909	9
018.1310	018.1910	10
018.1311	018.1911	11
018.1312	018.1912	12
018.1313	018.1913	13
018.1314	018.1914	14
018.1315	018.1915	15
018.1316	018.1916	16